

JT2Go Desktop Frequently Asked Questions

- What is JT2Go?
- What features are included in JT2Go?
- I like working with JT. How can I get more functionality?
- My JT file is supposed to have PMI in it. How do I display it?
- How are JT2Go and JT Open related?
- Can I have JT2Go and Teamcenter installed on the same computer?
- Can JT2Go be installed to integrate with my Teamcenter PLM products?
- Can I send JT2Go to someone else?
- Do I need to upgrade my graphics card to use JT2Go?
- Do I need to be "Administrator" to install and run JT2Go?
- I have "Administrator" rights and the Microsoft Visual C++ 2005 SP1 Redistributable Package installed and JT2Go install still fails.
- Does JT2Go support "Silent Installs" or installs from a command line?
- What is PLM XML? How is it used by JT2Go?
- How is JT2Go different from XpresReview?
- Can JT2Go read markups created by someone else?
- Can I insert JT files into Microsoft Office documents using JT2Go?
- I am using Office 2007, how do I activate JT2Go in PowerPoint 6?
- I am using Office 2010, how do I activate JT2Go in PowerPoint?
- There is a ~ next to the measurements I take. What does this mean?
- Can I control how assemblies are displayed when loaded into JT2Go?
- Does GTAC support JT2Go?
- How can I get support for JT2Go?
- How will I get updates for JT2Go?
- How can I tell what has been added to a version when "Check for Updates" reports an update is available?
- How can I create JT files of my own?
- I embedded a JT file in PowerPoint and it does not activate when I am in presentation mode, what's wrong?
- I cannot drag a JT file into an Excel spreadsheet? Why not?
- Can you add a JT2Go window into a web page?
- I just installed JT2Go 10.1.2 and my JT files are not displaying properly.

JT2Go Desktop Frequently Asked Questions

What is JT2Go?

JT2Go is a no-charge 3D geometry viewer for JT files. It enables individuals throughout the supply chain with the power of 3D JT data. JT is the world's most widely used 3D visualization and interoperability format. JT files are produced and consumed by JT adopters around the world.

[Back to list](#)

What features are included in JT2Go?

JT2Go is a no cost personal viewing tool to allow users to view JT, CGM and TIF data.

- 3D Viewing for JT and PLM XML+JT. Standard features include Zoom, Pan, Rotate, Seek, Zoom Area, Fit All, Product Structure Trees, Attributes and Standard Views
- Basic Measurement using facets in JT files without B-rep
- Precise measurement in JT files that have B-rep
- Geometry selection filters for measurement functions
- Basic Cross-Section on Facets
- PMI viewing with full data management tree display
- 2D Viewing (CGM, TIF) , Zoom, Pan, Seek, Zoom Area, Fit All
- 3D and 2D Print
- Microsoft Office integration for JT data
- Able to load monolithic JT files from a URL
- Merge PLM XML snapshots
- Create/View snapshots during session
- View Teamcenter Visualization authored session (.vf) and collaboration (.vfz) files
- Ultra Lightweight Precise (ILP) representation display support
- Merge PLM XML snapshots

[Back to list](#)

I like working with JT. How can I get more functionality?

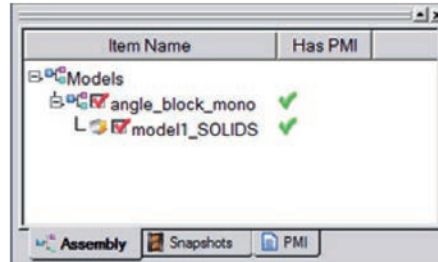
Teamcenter Visualization is a complete, scalable, suite of process-oriented visualization products that are tightly integrated into our Teamcenter PLM solutions. Teamcenter Visualization offers high-performance process oriented solutions for Drawing Review and Analysis, Design Review and Digital Mockup.

[Learn more about Teamcenter Visualization.](#)

[Back to list](#)

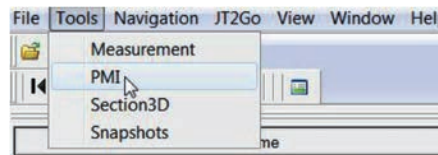
My JT file is supposed to have PMI in it. How do I display it?

The Project Workspace dialog has a field which reports the presence of PMI (Product Manufacturing Information)



To enable PMI viewing:

Turn on PMI viewing by selecting "PMI" from the Tools pull-down.

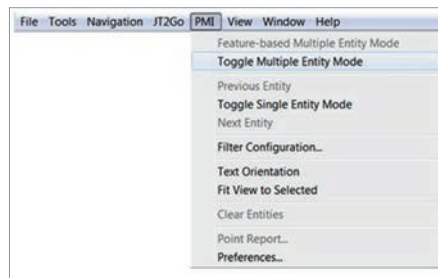


PMI will now list on the top bar.



Select the "toggle multiple entry" button then the geometry to turn all PMI on.

Select "toggle single entry mode" then the geometry to cycle through PMI with the arrows.



[Back to list](#)

How are JT2Go and JT Open related?

JT Open is a reference to The JT Open Program. The JT Open Program members are focused on utilizing JT as an industry interoperability standard format for geometry-centric business processes (workflows) and for enabling viewing and interrogation of design data using JT. JT2Go was developed at the request of JT Open Program members and fulfills a mutual desire to extend JT's value throughout the PLM industry.

[Learn more about joining JT Open Program.](#)

[Back to list](#)

Can I have JT2Go and Teamcenter installed on the same computer?

Yes, JT2Go was designed to work in harmony with all Teamcenter Visualization products. The JT MS Office Application Integration is a shared capability with Teamcenter Visualization. Each products installation program will report status on this integration to ensure proper configuration. Options are provided in the JT2Go Installation process to control the JT MS Office Application Integration feature.

[Back to list](#)

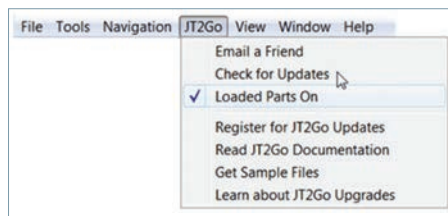
Can JT2Go be installed to integrate with my Teamcenter PLM products?

No, JT2Go is not designed to integrate with Teamcenter. It is a personal viewing tool and cannot interact with (check-in/check-out) any of our PLM products. Teamcenter offers a complete range of solutions that tightly integrate JT with your PLM processes.

[Back to list](#)

Can I send JT2Go to someone else?

Yes, you may share JT2Go with your friends or colleagues as long as it remains unaltered and is not packaged with a software solution. In fact, there is a "Tell a Friend" option in the software that makes it easy to send your friend or colleague the links to JT2Go download sites around the world.



Each user must accept the license agreement prior to their first time using the software.

[Back to list](#)

Do I need to upgrade my graphics card to use JT2Go?

It may be necessary to upgrade your graphic card driver which can be obtained from your vendor. Upgrading your graphic card itself will depend upon your performance needs.

[System Requirements](#)

[Back to list](#)

Do I need to be "Administrator" to install and run JT2Go?

Due to a change in the MS platform, as of the 2007.1 release of JT2Go there are system files which if not already present on the machine require the user performing the JT2Go installation to have administrative privileges.

In the event system administrators would like to enable all users with the ability to install JT2Go there is a separate Microsoft Visual Studio support file installer which can be installed after which the JT2Go installer will proceed without the administrator right requirements.

The separate Microsoft Visual Studio support file installer is available for download from the Microsoft website at: <http://www.microsoft.com/downloads/details.aspx?FamilyID=200B2FD9-AE1A-4A14-984D-389C36F85647&displaylang=en>

[Back to list](#)

I have "Administrator" rights and the Microsoft Visual C++ 2005 SP1 Redistributable Package installed and JT2Go install still fails.

On Windows 7 you have to be logged on as Administrator to complete the install, just having Administrator rights does not provide the required level of privilege.

[Back to list](#)

Does JT2Go support "Silent Installs" or installs from a command line?

Yes. There are several parameters which can be applied through the command line syntax. The general syntax for the command line is `JT2GoSetup.exe /s /v"/qb+ <install parameters>`

The following parameters are available:

- Define the install directory:
`INSTALLDIR="C:\Program Files\UGS\JT2Go\"` (The 'quotes within quotes' should be escaped with backslashes)
- Install for all users:
`ALLUSERS=2`
- Control for GUI installer options

Option 1 – Integrate JT2Go with MS office applications:

Default value is to do the integration, if you don't want that then specify `INSTALL_OFFICE_INT=0`.

If you do want integrations, then you don't need to specify anything.

Option 2 – Install a Desktop shortcut:

`DT_SHORTCUT=1`

Default value is to install a DT shortcut, if you don't want a shortcut then specify `DT_SHORTCUT=0`.

If you do want the shortcut then you don't need to specify anything.

Option 3 – Disable internet connection during JT2Go sessions:

`DISABLE_INTERNET=1`

Default value is to have internet connections on, if you don't want that then specify `DISABLE_INTERNET=1`.

If you want internet connections enabled, then you don't need to specify anything.

An example command line to install for all users in the specified directory using a JTOE installation key:

```
JT2GoSetup.exe /s /v"/qb+ALLUSERS=2 INSTALLDIR="C:\Program Files\UGS\JT2Go\""
```

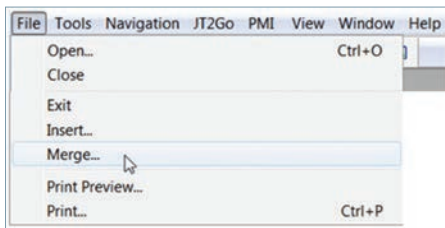
[Back to list](#)

What is PLM XML? How is it used by JT2Go?

PLM XML is a W3C compliant XML schema created by Siemens PLM Software to facilitate product lifecycle interoperability by sharing high-content product data between PLM applications. PLM XML schemas are available at no charge from http://www.plm.automation.siemens.com/en_us/products/open/plmxml/index.shtml

JT2Go can display PLM XML files create from Teamcenter two ways:

1. A PLM XML file saved from Teamcenter with product structure can be loaded the same as a JT file directly from the disk and displayed. A PLM XML example of this type is available from the [Downloads](#) page. This process allows users to define an arrangement of JT content and save it as PLM XML for display.
2. A PLM XML file saved from Teamcenter without product structure can be merged into a JT2Go session that has an existing JT assembly already loaded and displayed. The merge capability allows JT arrangements to be applied to an existing session to communicate multiple arrangements of data for a pre-loaded JT file.



[Back to list](#)

How is JT2Go different from XpresReview?

JT2Go is specifically designed for viewing JT files with the added value of viewing CGM and TIF. XpresReview is an electronic design review solution that allows you to easily share multiple documents in a collaborative environment. Supported by NX and Solid Edge, XpresReview uses the PCF file format to easily combine 3D models and other associated documents into a single package, so participants in your review process have all the information they need to communicate effectively. XpresReview supports JT files but JT2Go does not read PCF files.

[Back to list](#)

Can JT2Go read markups created by someone else?

Yes. With Version 10.1.2 JT2Go Desktop users are able to view collaboration files authored using Teamcenter Visualization. Collaboration files authored with Teamcenter Visualization store the JT file and the associated markups in a file with the extension of .vfz. See the Teamcenter Visualization documentation for more information on creating and sharing collaboration files.

[Back to list](#)

Can I insert JT files into Microsoft Office documents using JT2Go?

Yes, as of the 5.1.0.3a version of JT2Go anyone with JT2Go and Microsoft Office can create JT Documents.

[Back to list](#)

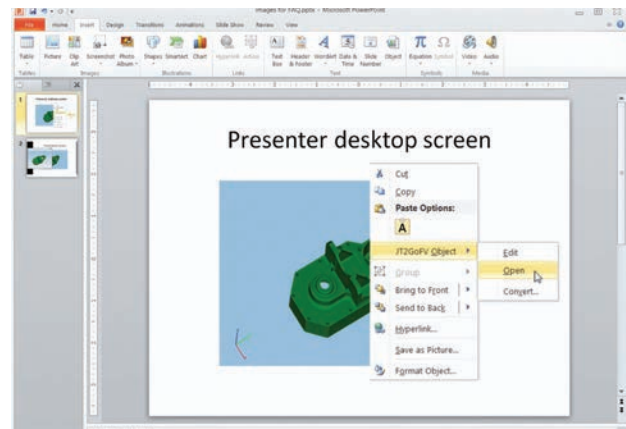
I am using Office 2007, how do I activate JT2Go in PowerPoint?

There is an Animations Tab. Select "Custom Animations" and you should see a Custom Animations window. Select/Highlight the inserted object in the document, and the Custom Animations window will allow access to the "Add Effect" button. There is an "Object Actions" option, with the choice for "Edit" or "Open". Edit will embed, Open will launch the viewer.

[Back to list](#)

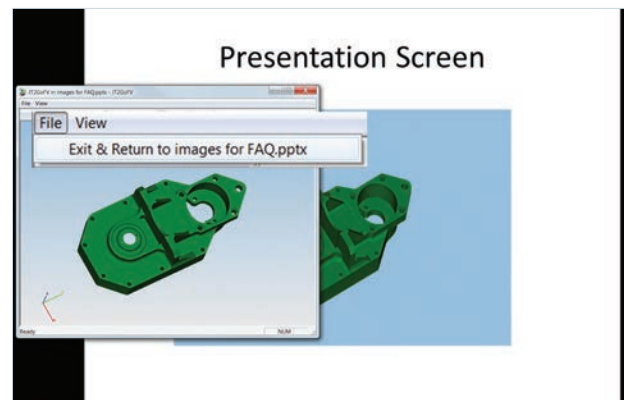
I am using Office 2010, how do I activate JT2Go in PowerPoint?

JT2Go is not activated from the image displayed in the presentation screen. To activate JT2Go while in presentation mode required a dual monitor set up. Activate JT2Go by right clicking in the image then select "JT2GoFV Object" and "Open".



JT2Go will open as a new dialog on the presentation display monitor.

To close JT2Go while in display mode select "File" from the top bar and "Exit & Return to presentation."



[Back to list](#)

There is a ~ next to the measurements I take. What does this mean?

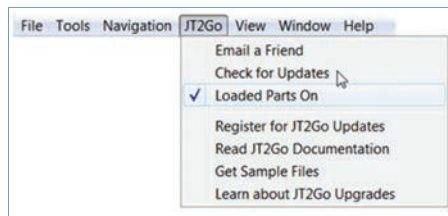
The tilde character (~) indicates that the measurement is an approximation from the facet data.

[Back to list](#)

Can I control how assemblies are displayed when loaded into JT2Go?

Yes. The default viewing for assemblies in JT2Go is "All On". This prevents the user experience of a blank display when loading a JT assembly and the need to check the box next to the assembly name in the product structure browser for display.

It is possible to turn off the display of geometry when loading assemblies from the JT2Go selection top bar.



[Back to list](#)

Does GTAC support JT2Go?

JT2Go is a no cost product and as such is not supported by Siemens PLM Software's Global Technical Access Center (GTAC).

[Back to list](#)

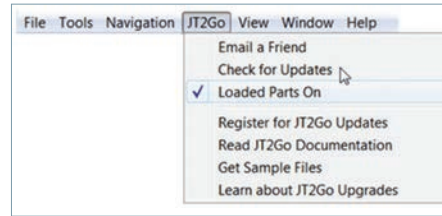
How can I get support for JT2Go?

JT Open Program members receive GTAC support for JT2Go, follow [this link](#) for information on joining the JT Open Program. If you are already a JT Open Program member, when contacting GTAC for support please be prepared to provide your JT Open Program Sold to info.

[Back to list](#)

How will I get updates for JT2Go?

Check for updates from within the JT2Go software by selecting "Check for Updates" from the top bar under "JT2Go".



[Back to list](#)

How can I tell what has been added to a version when "Check for Updates" reports an update is available?

The dialog displayed when "Check for Updates" is selected has a button called "What's new". Select this to see what has been added to the new JT2Go download.

[Back to list](#)

How can I create JT files of my own?

JT files can be created from all major CAD systems either directly or through 3rd party developers (visit [JT Open Member Products](#) for more information). JT is a standard output format from Siemens PLM Software products. Solid Edge and NX and can be automatically created whenever you save a file or even check a file into Teamcenter.

[Back to list](#)

I embedded a JT file in PowerPoint and it does not activate when I am in presentation mode, what's wrong?

See the [JT2Go Desktop – Microsoft Office Integration](#) web page for information on the Office integration.

[Back to list](#)

I cannot drag a JT file into an Excel spreadsheet? Why not?

Drag and drop is not supported for Excel. See the JT Document Plug-in page for instructions.

[Back to list](#)

Can you add a JT2Go window into a web page?

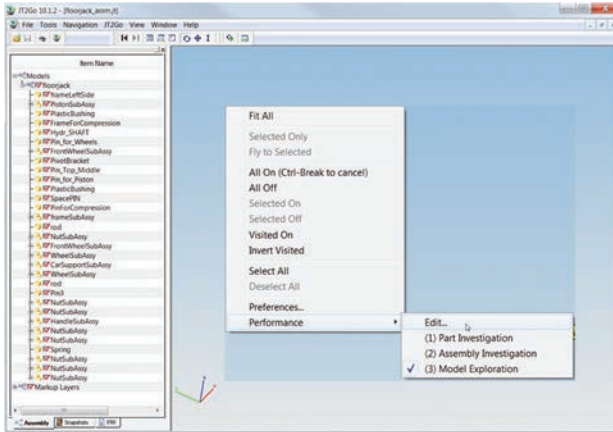
No, embedding JT2Go into a web page is not supported.

[Back to list](#)

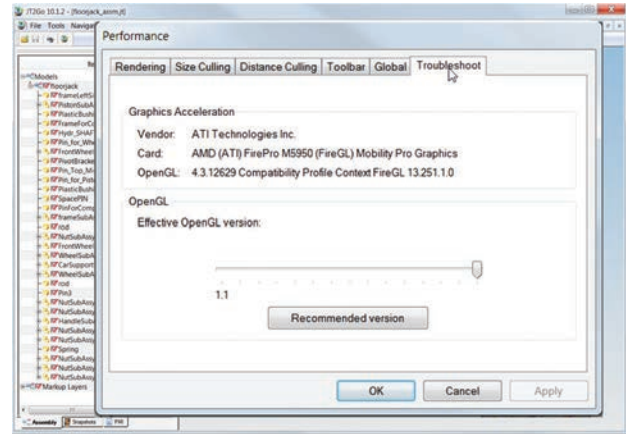
I just installed JT2Go 10.1.2 and my JT files are not displaying properly.

JT2Go 10.1.2 requires updated video drivers for proper display of geometry. If the drivers are wrong the views will have a “hedgehog” rendering or infinite boundaries on some content, or cross section issues. To fix this you can update your video drivers to the latest version or change the performance setting.

To change the performance setting, right mouse click in the graphic area and select “Performance” then “Edit”.



With the performance dialog visible, select “Troubleshoot” from the tabs.



Reduce the Effective OpenGL version until the display is correct.

Your driver level will determine what setting solves the problem.

[Back to list](#)